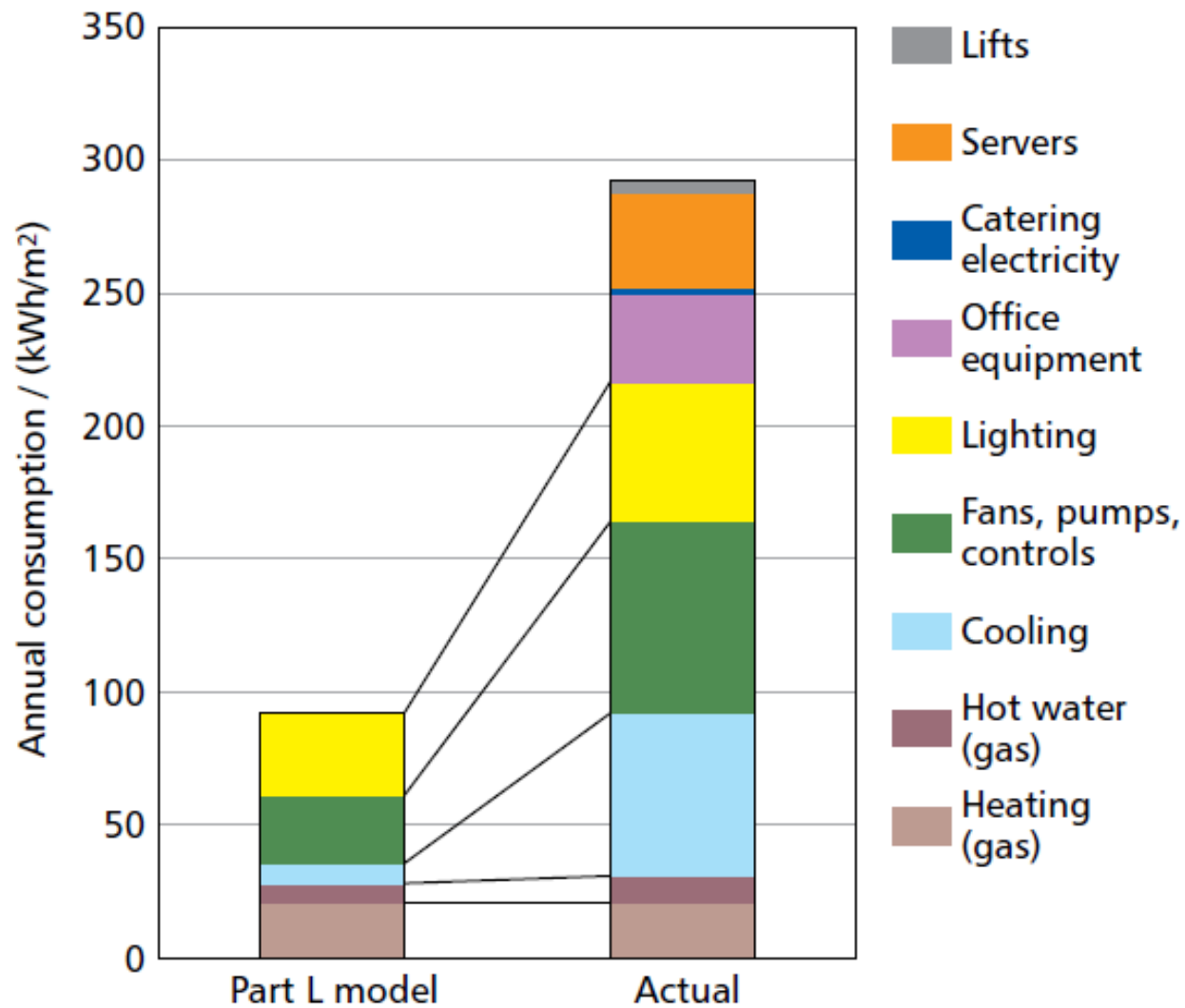


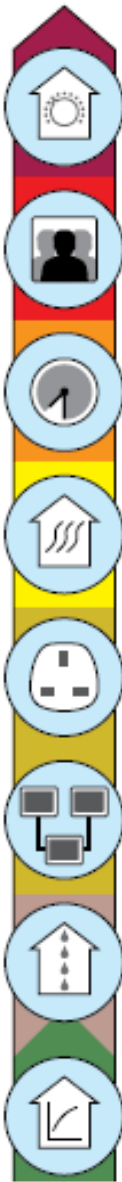
How much energy is your new building going to use?



**David Cheshire
Richard Belfitt
AECOM**

Part L model versus actual energy use





Building management

Occupant density

Operating hours

Special functions (e.g. Swimming pool)

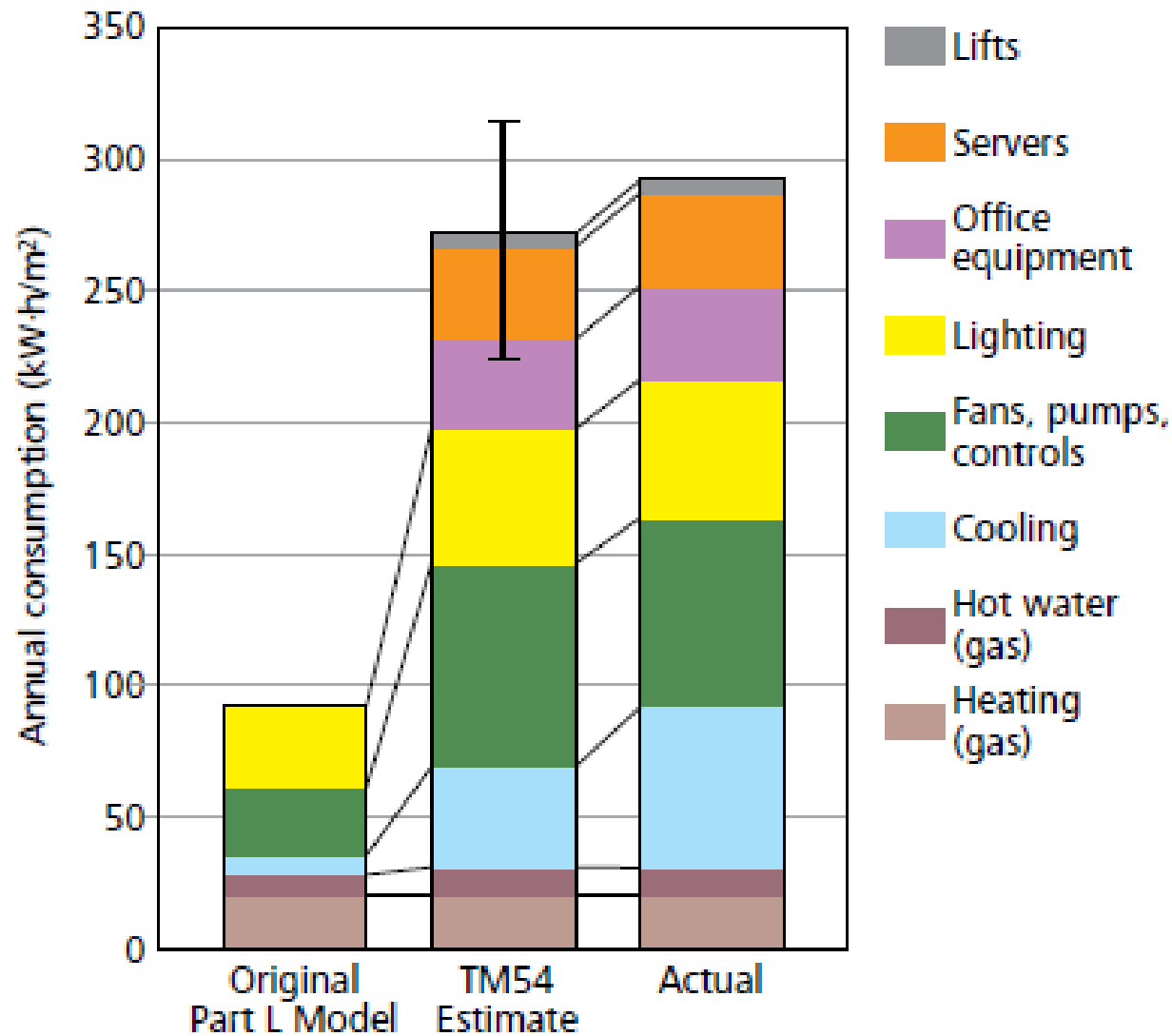
Small power equipment

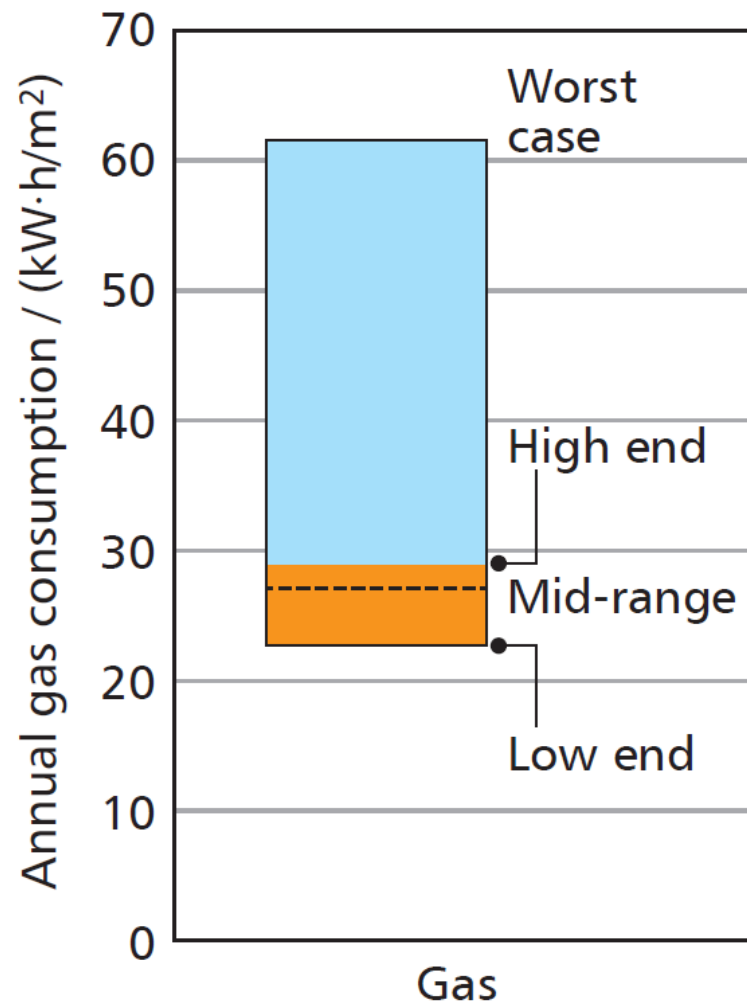
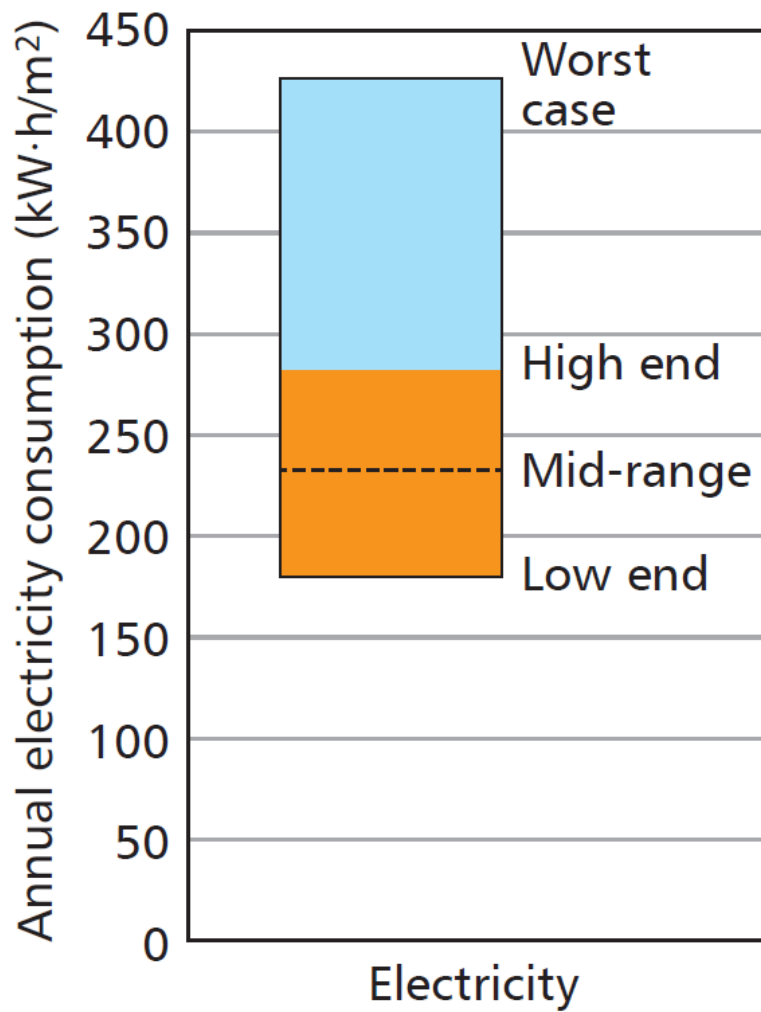
ICT including servers, telecoms

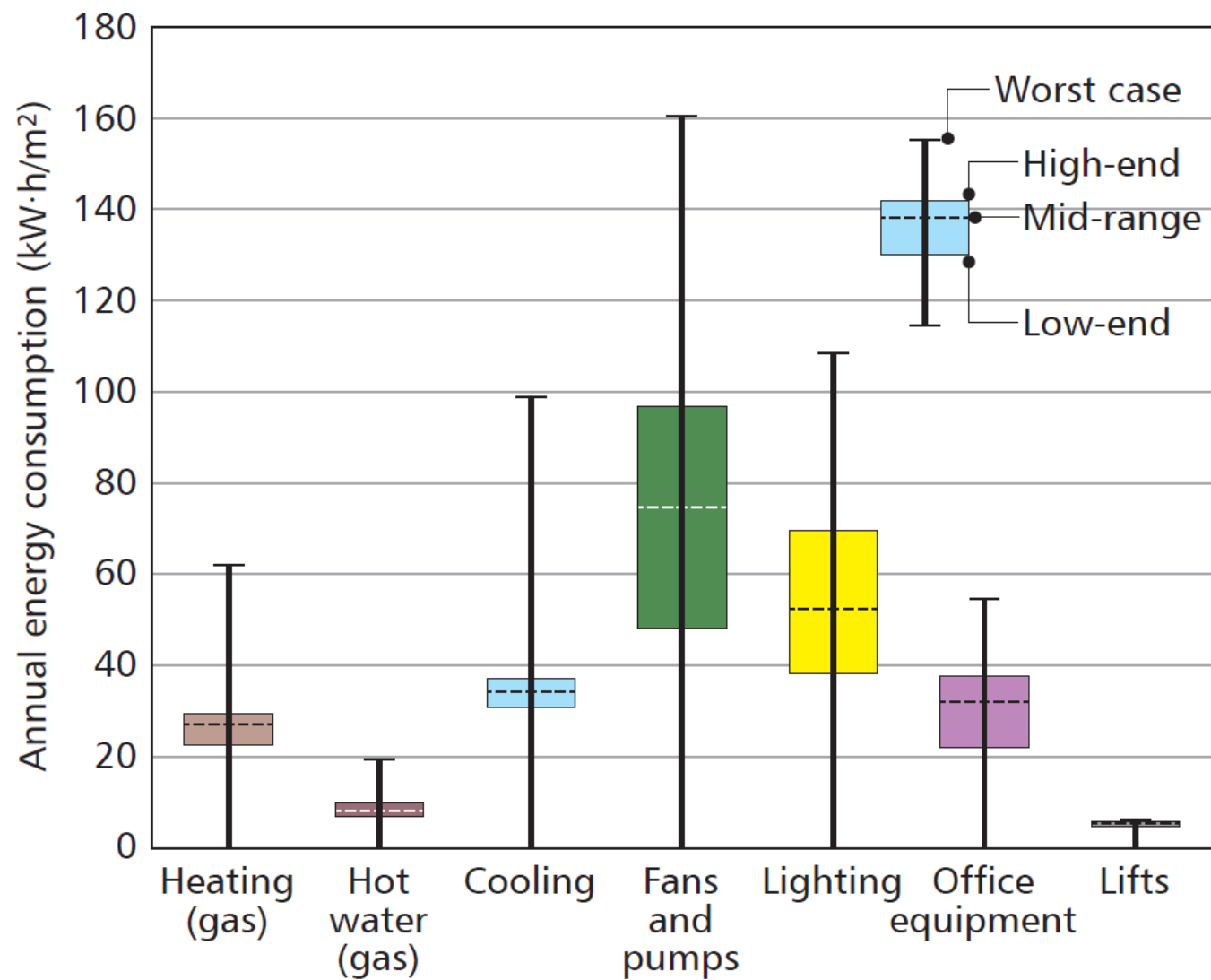
Assumptions and simplifications in models

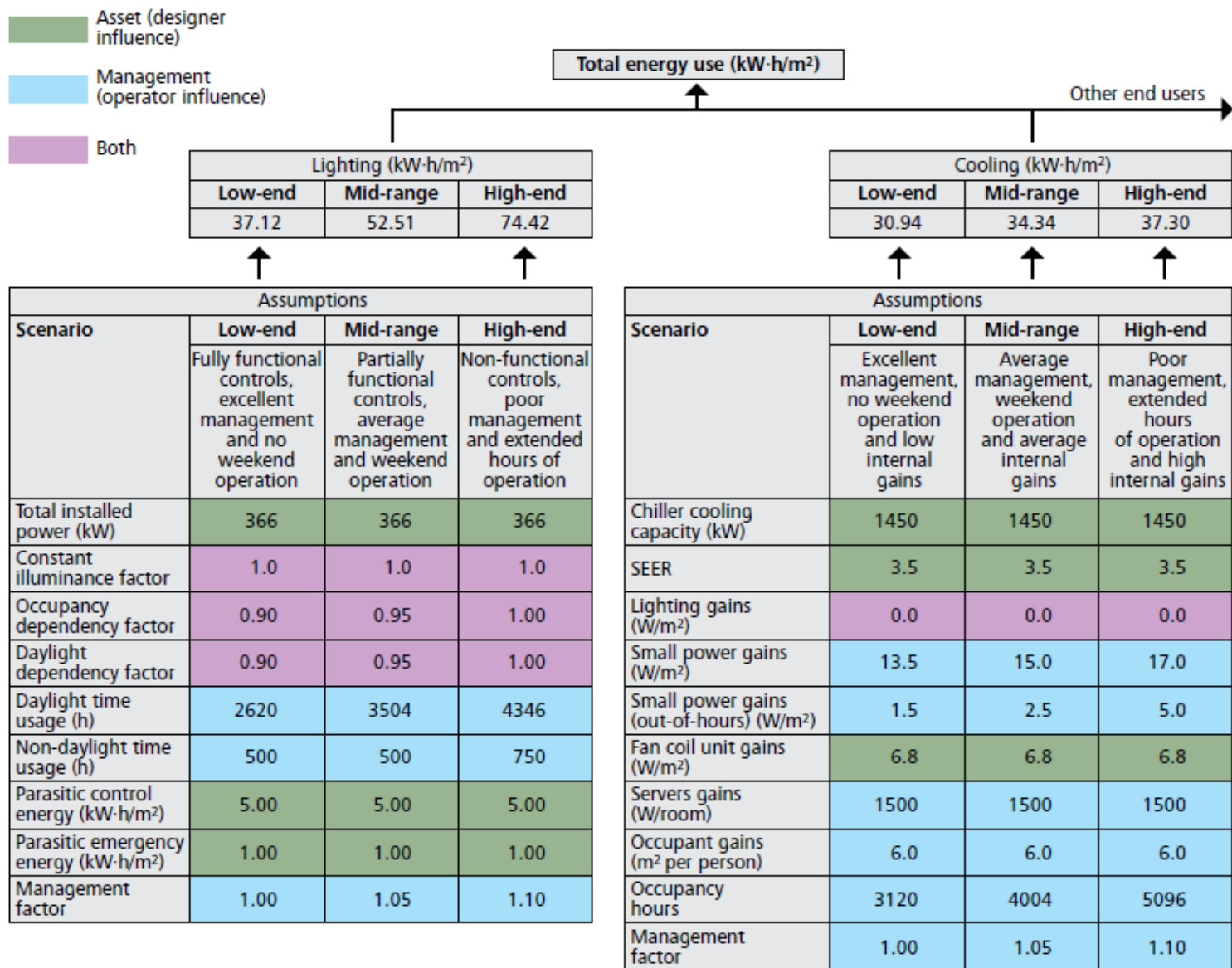
Part L calculations

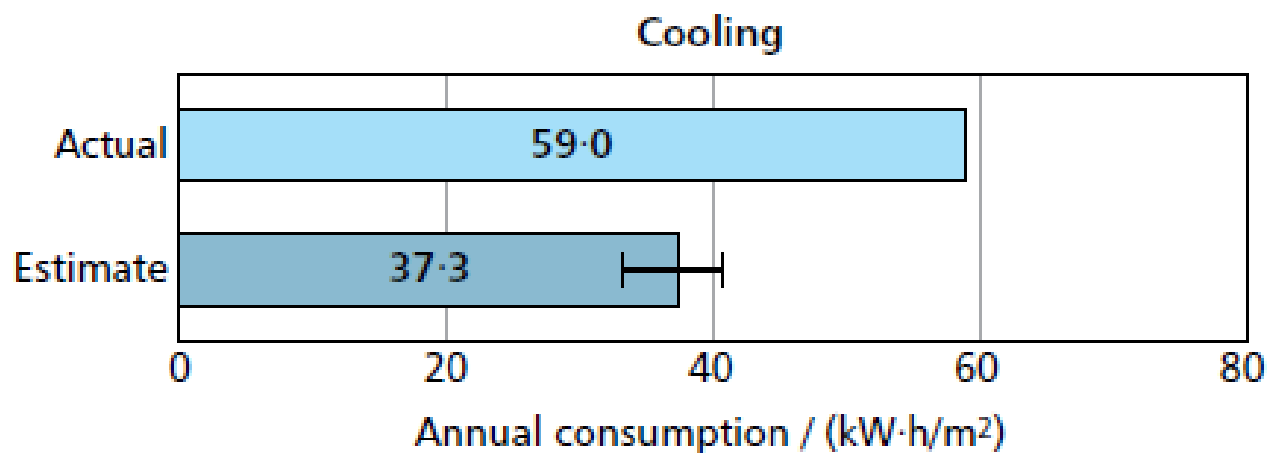
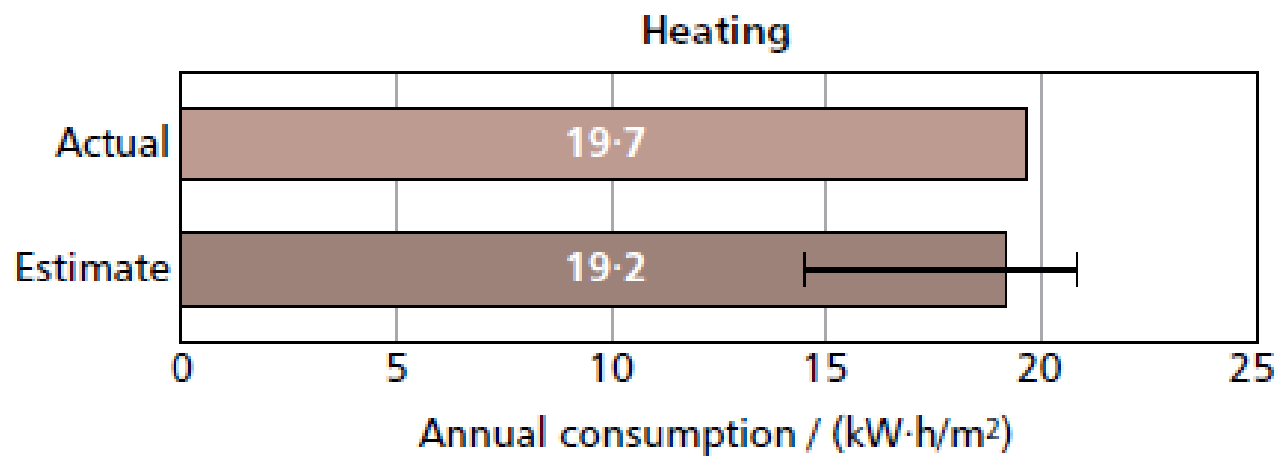
Part L model versus TM54 estimate versus actual





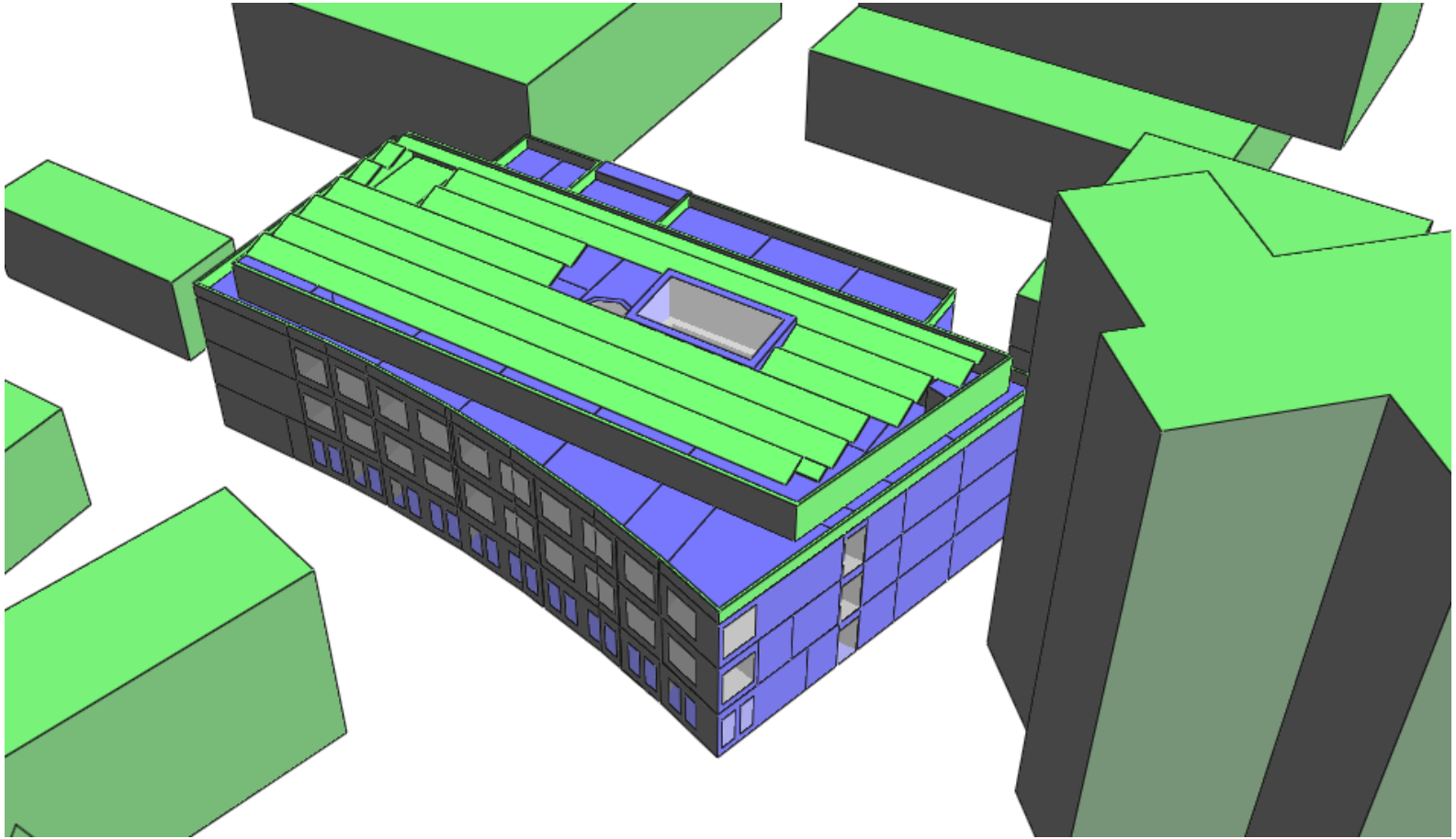


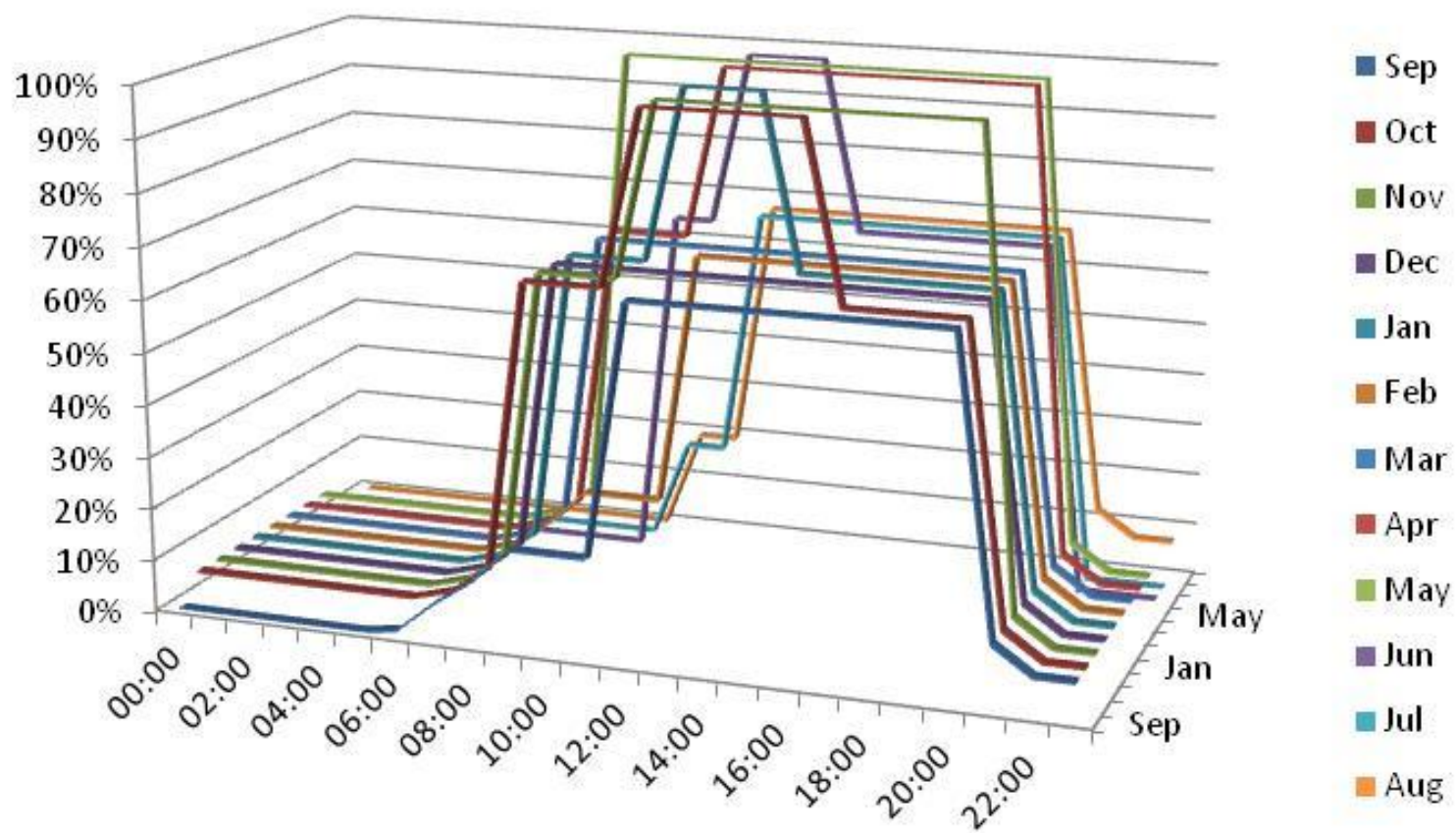








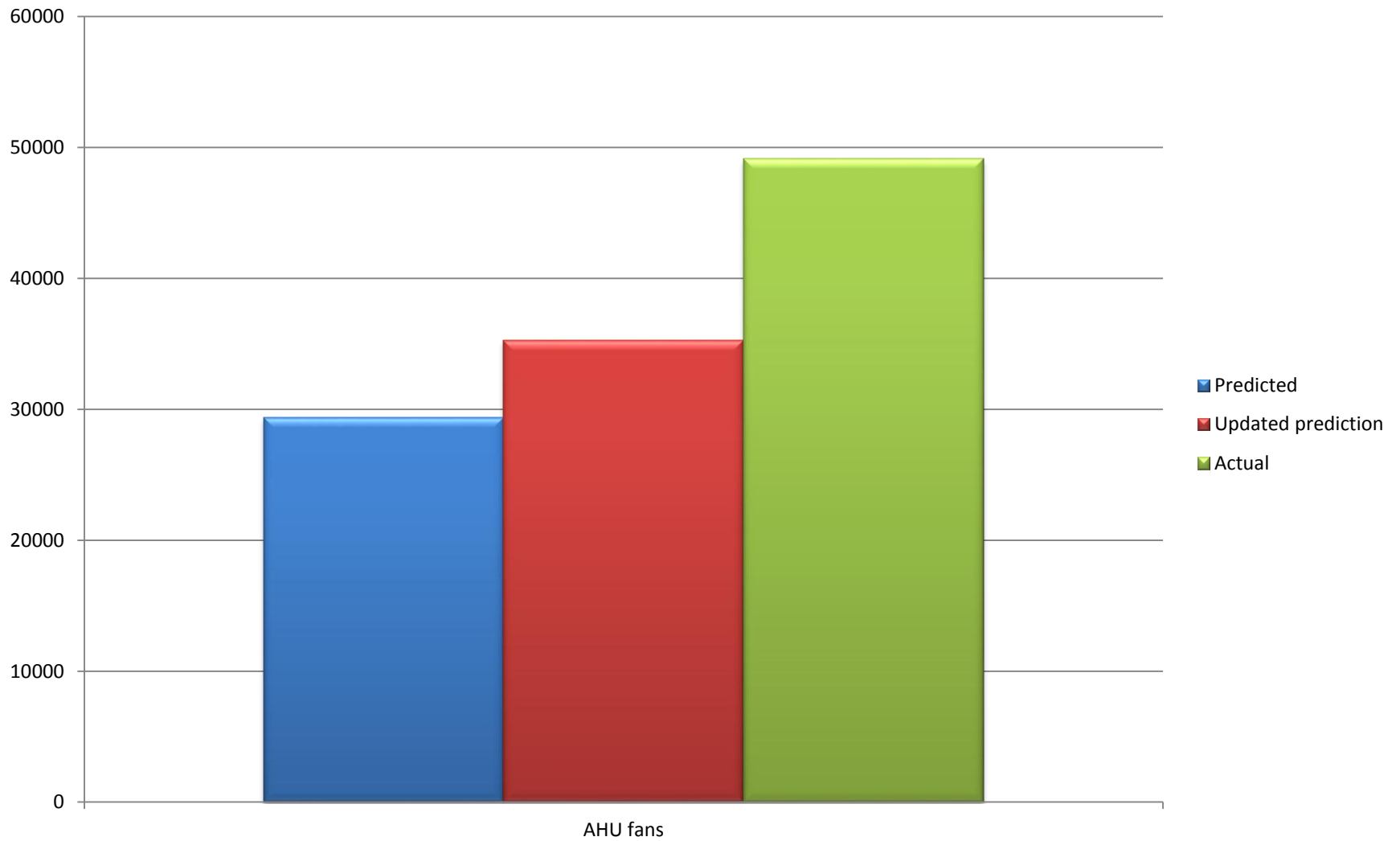




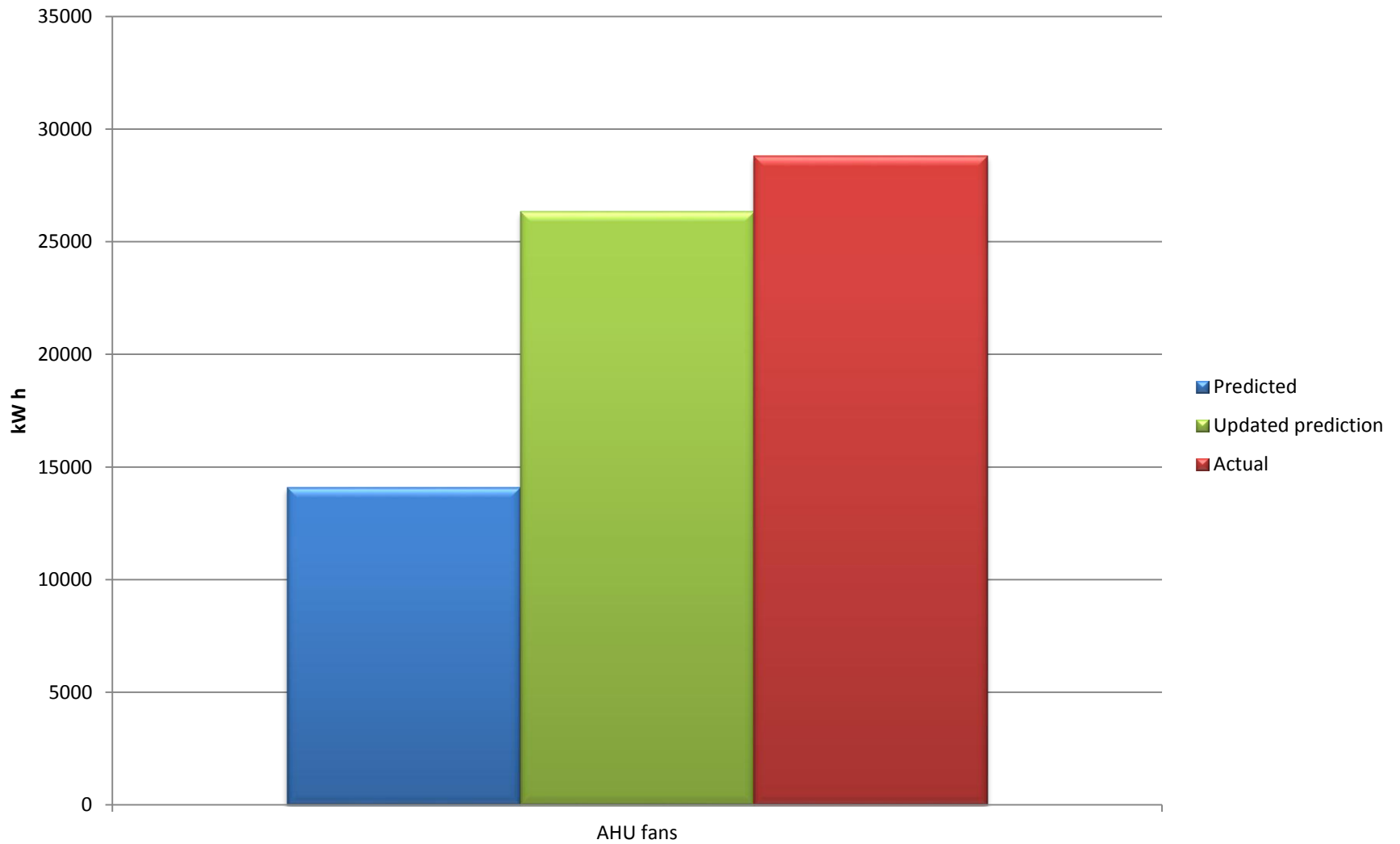




FANS

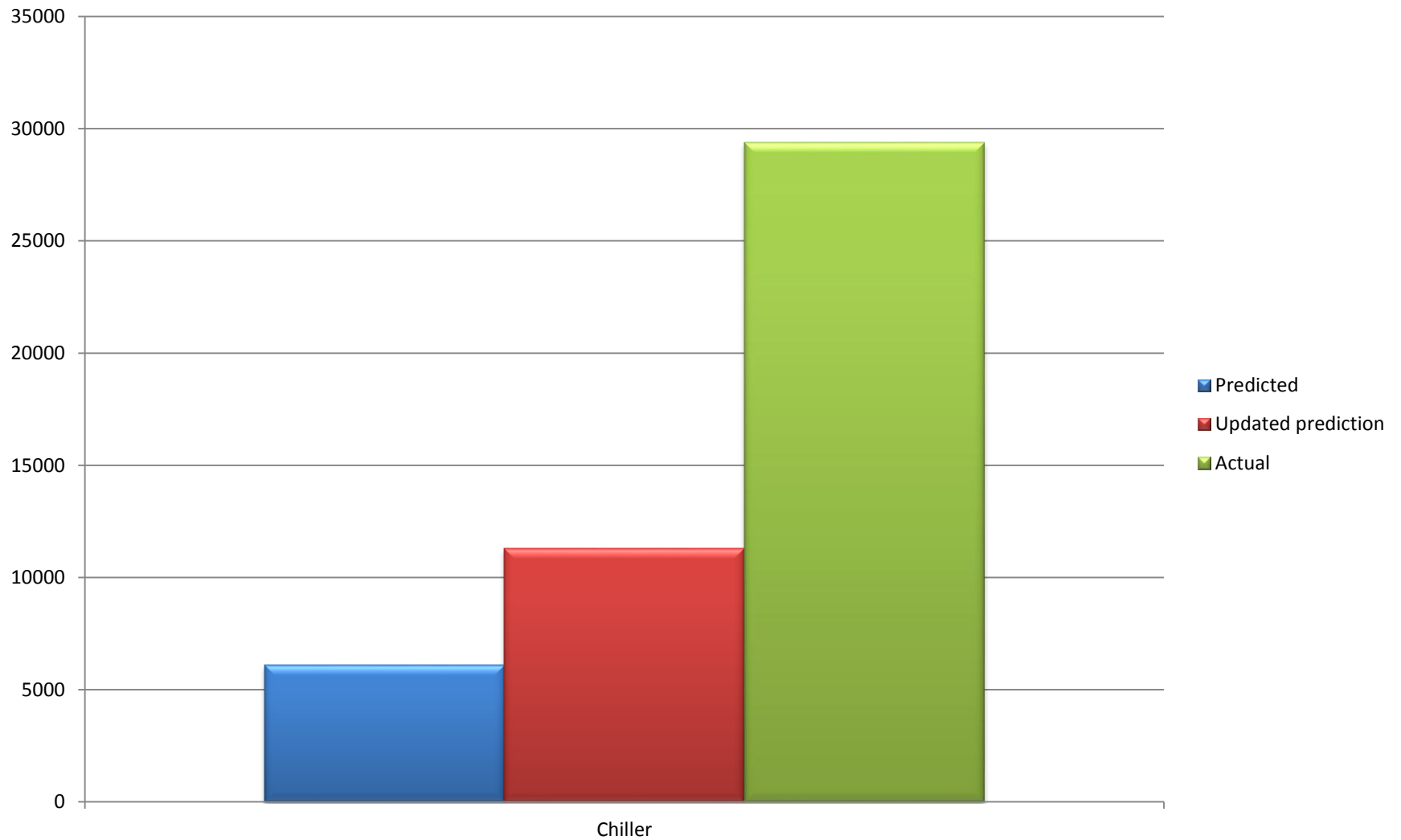


FANS





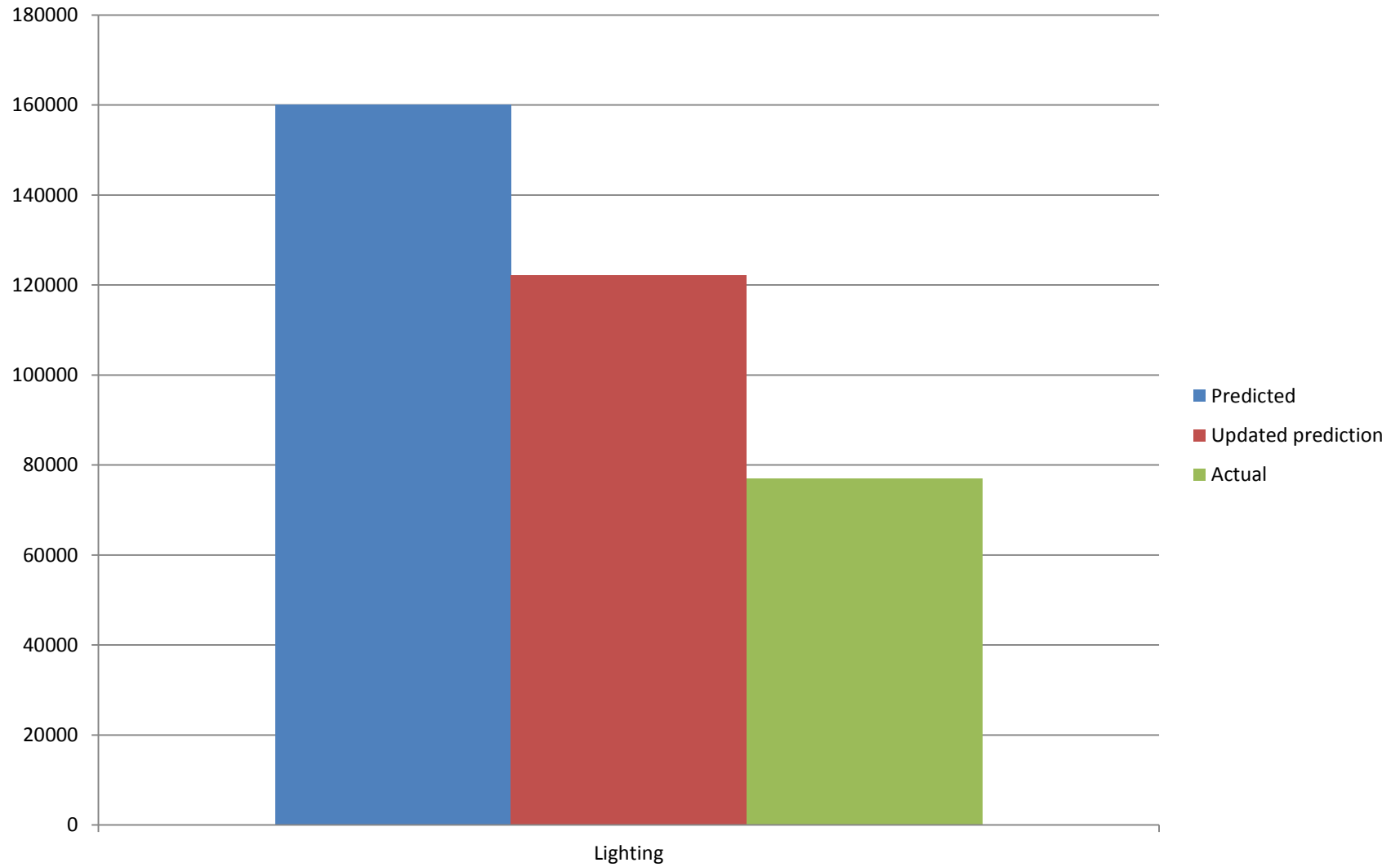
CHILLERS







LIGHTING

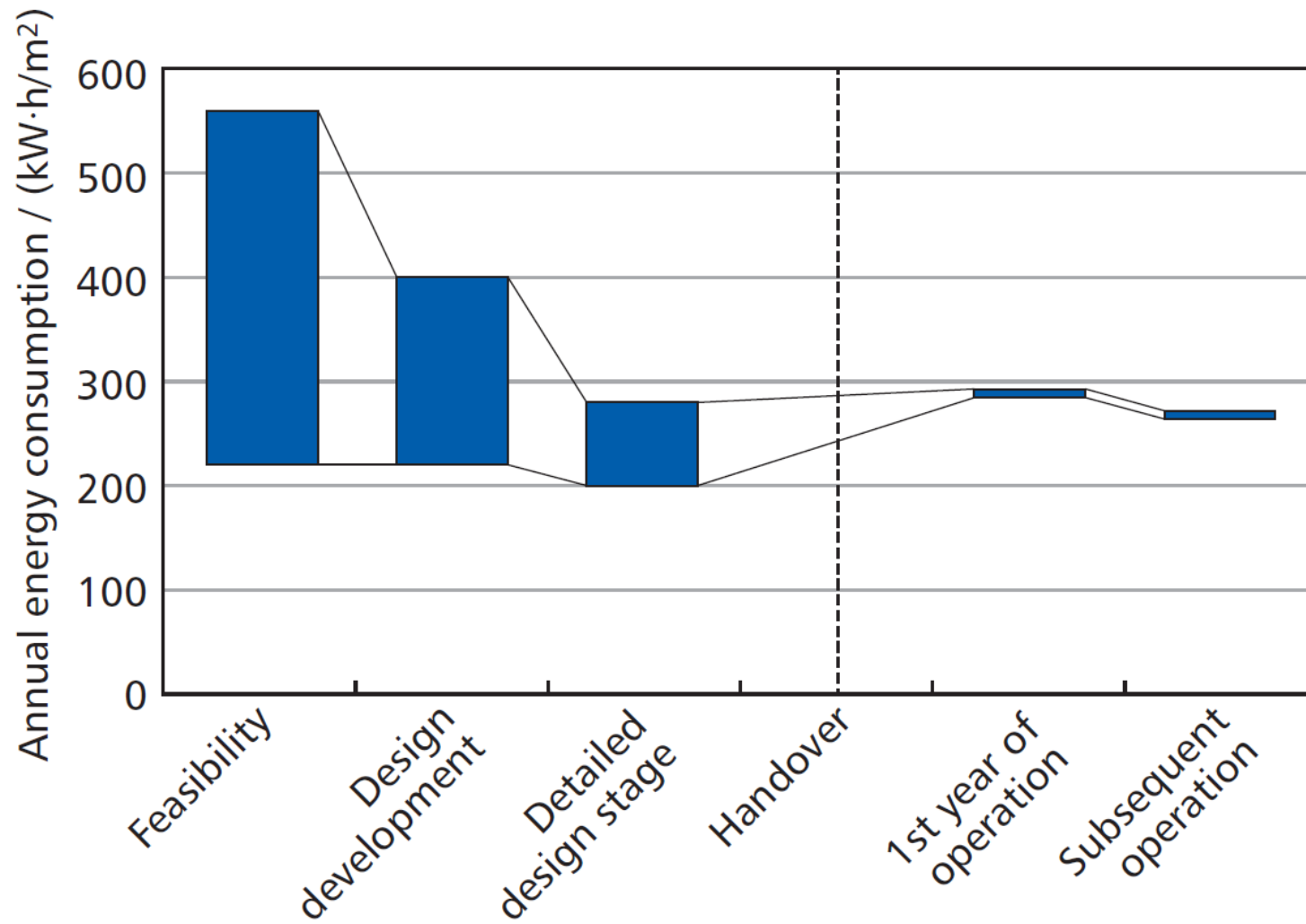


This blog was written by Mitchell Layng, M&G Real Estate, Associate Director : Portfolio Energy Management

Development Sustainability Principles

**THE CROWN
ESTATE**





A close-up photograph of a person's hand holding a large, translucent, glowing sphere. The sphere is illuminated from within, creating a warm, golden-yellow glow that radiates outwards. The text "Thank you" is written in a clean, white, sans-serif font across the center of the sphere. The background is dark and out of focus, showing the person's torso and a dark shirt. The lighting is soft and focused on the sphere and the hand, creating a sense of warmth and gratitude.

Thank you